

Fast Flow and Sekisui Announce Strategic Alliance Partnership



Fast Flow; a rainwater solutions specialist, headquartered in Singapore and Sekisui; a global Japanese manufacturing giant in high quality pipes, have entered into a strategic partnership to create a unique and dynamic offering in rainwater management solutions for the Japan market.

Whilst Sekisui brings an extensive distribution network and strong industry relationships in Japan, Fast Flow will compliment the partnership with advanced siphonic technology software and siphonic hardware. This combination of Sekisui's market driven distribution network, coupled with Fast Flow's specialist software that allows user driven self balancing hydraulic calculations, will bring a unique and high-quality market offering in Japan.

In addition, both Companies have products and systems which embrace distinct yet complimentary technologies. This combines market requirements and Client solution strategies, which have a broad appeal to consumers looking for reliable, high performing rainwater management solutions. The scalability and Client oriented options that the partnership solutions will bring, gives this alliance technology driven solutions that are efficient, effective and can be deployed with minimum complexity.

This partnership opens new opportunities for both parties to work closely together, in giving each a platform to advance their respective strategies whilst staying complimentary and delivering to their Clients new options and models for managing rainwater challenges. For more information visit www.sekisuichemical.com and www.fastflowgroup.com.

Inside this issue...

- Fast Flow and Sekisui Announce Strategic Alliance Partnership
- The New Sarawak Museum
- Recent Advances
- Project Highlights
- Our Presence



The New Sarawak Museum



Image source: www.akdi.net

A new landmark addition to Kuching's skyline started its construction as part of the museum and heritage trail project in 2017. Designed by Arkitek KDI Sdn Bhd, this uniquely shaped five-storey consists of exhibition gallery spaces on Levels 2 to 5, flanking a central atrium on both wings. Level 1 houses commercial lots, a café, function rooms and auditorium spaces, which support and complement the temporary exhibition gallery.

Fast Flow Malaysia started the installation project for this new Sarawak Museum in September 2017. The priority was to create a system that is fit for the requirements in the building's sophisticated roof design and hydraulic calculation. The building is served by Fast Flow Siphonic system. There are Primo™ rainwater outlets to drain the R.C roof area and Piccolo™ rainwater outlets which are designed to work with small gutters (200mm wide). In addition, the Primo™ series are specially designed to minimise any forms of blockages resulting from debris or fallen leaves collecting on the rooftop.

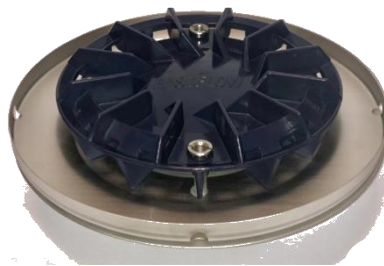
Fast Flow fulfils the architect's requirements for value added design. The emphasis on ecology is reflected in Fast Flow technology as well: Fast Flow is well known in the field for energy efficiency and environmental consideration. The company took the bold initiative to go 'Lead Free' and follow European and US standards. The psPipe™ has been granted the right use of the Singapore Green Label as Environmentally Preferred Pipes (Product Certification No. 069-001-3009) by the Singapore Green Labelling Scheme Secretariat.

Due for completion in 2020, the new Sarawak Museum building aims to achieve a Green Building Index-certified rating.

Fast Flow Introduces the SLR™ Series

Fast Flow is committed to continuous R&D programme with scientific consistency and rigour to sustain our product innovation, system integration, breakthrough in design and technology leadership in almost all the markets we participate.

The SLR™ outlet series is one of Fast Flow's recent advances in rainwater management system. Dedicated to industrial building projects, the SLR™ range works on concrete (RC) roofs and metal gutters (MG).



SLR 75™ RC
SLR 100™ RC



SLR 75™ MG
SLR 100™ MG

Suitability

Industrial buildings such as High-end Factories and Warehouses

Material Specifications

Ceramic Coated Aluminum alloy and Stainless Steel

Project Highlights Q2/2018

Australia

Newly Secured Projects



Project name: Herston Quarter
Catchment area: 6,000 sqm



Project name: 300 George Street Office Tower
Catchment area: 1,775 sqm

Malaysia

Newly Secured Projects



Project name: IKANO Shopping Center Johor Bahru
Catchment area: 38,251 sqm



Project name: TWY Mont Kiara
Catchment area: 1,660 sqm



Project name: TNB Balai Islam Bangsar (Phase 1)
Catchment area: 3,980 sqm



Fast Flow (Thailand) Co. Ltd

Nutri Building, 3rd Floor,
46 Soi Pattanakam, 20
Suan Luang Bangkok
Thailand 10250
T: +66 2 369 3240-4
F: +66 2 369 3245

Fast Flow Malaysia Sdn Bhd

No. 16, Jalan 15/22,
Taman Perindustrian Tiong Nam
40200 Shah Alam, Selangor
Malaysia
T: +603 5524 7022
F: +603 5524 7122

Fast Flow Malaysia Sdn Bhd (Kota Kinabalu)

Block B, Unit No.3, 2nd Floor Intermediate Unit
Jalan Lintas
88300 Kota Kinabalu
Malaysia

Fast Flow Singapore Pte Ltd

No 1 Fifth Avenue,
#04-04 Guthrie House
Singapore 268802
T: +65 65004650
F: +65 6500 4665

Fast Flow Systems Australia Pty Ltd

Unit 12/9-11
Redcliffe Gardens Drive
Clontarf
Queensland 4019
Australia
T: +61 1300 801855

Above information does not include the addresses of our licensed distributors, please contact us at communications@fastflowgroup.com for further information regarding our distributors in China, Indonesia, Taiwan, Japan and Turkey.